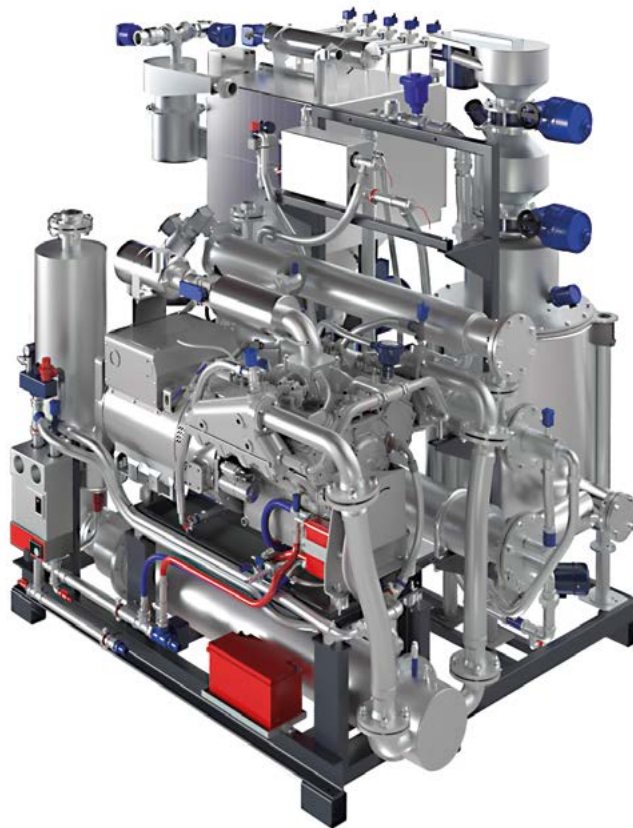


ENTRADE

THE CLEAN ENERGY COMPANY



ENTRADE

THE CLEAN ENERGY COMPANY



Technical specifications E5 WOOD CHIPS

Electricity:	50 kWel	Duration of installation:	2 - 72 hours
Heat output:	120 kWth	Approval requirements:	regional differences
Efficiency:	85 %	Ash emptying service:	every 10 - 100 hours
electrical efficiency:	25 %	Service oil change:	every 250 - 700 hours
thermal efficiency:	60 %	Service filter change:	every 2,500 hours
Temperature level:	90 °C / 60 °C		
Electrical output:	400 V / 50 Hz	ENTRADE offers extremely low-emission, clean and carbon-neutral energy from wood pellets and selected waste materials.	
Operating hours:	6.000 - 8.000 h/a		
Raw material:	wood chips A1-B2 quality, G30-G50, max. 13% water content		
Fuel requirement:	50 kg/h		
Equipment:	Current (3 phases, 70-75 Amp in operation, breaker 100 Amp), Cooling water, engine oil, paper filter		
Control:	Fully automatic operation 24 h Remote monitoring		
Volume:	60 dB(A)		
Space requirement:	8 m ² bzw. 20" sea containers and plus wood chip bunker		
Dimensions WxDxH:	3,72 x 1,56 x 2,00 m		

- Modular energy systems for industry and trade „Made in Germany“

- Scalable from 25 kW to 5 MW for electricity, heating and cooling.

- Turnkey commissioning in 2 days

ENTRADE provides the most cost effective power generation, which is available around the clock. A new standard for an affordable and reliable power supply.

ENTRADE Energiesysteme AG Berliner Allee 42 D-40212 Düsseldorf Germany

Email: sales@entrade.de Mobile: +49 (0)151 58266606 Phone: +49 (0)211 24 79 23 50 Web: www.entrade.de

London office: Web: www.entrade-e3.co.uk Email: info@entrade-e3.co.uk Phone: +44 (0)20 34 57 42 61

USA office: Web: www.entrade.co LA Kretz Innovation Campus 525 S. Hewitt Street Los Angeles, CA 90013 Phone: +1 (0)213 477-7392

Japan office: Web: www.entrade.jp Email: c.wagner@entrade.de Phone: +49 (0) 151 / 58 26 66 06